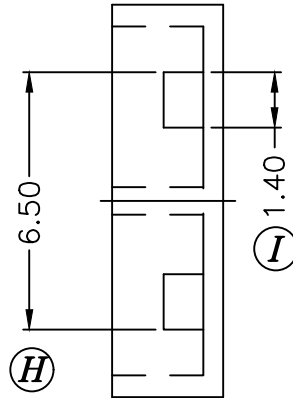
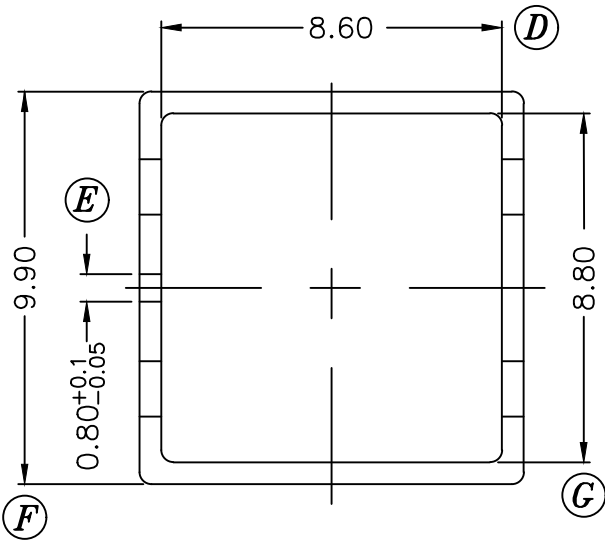
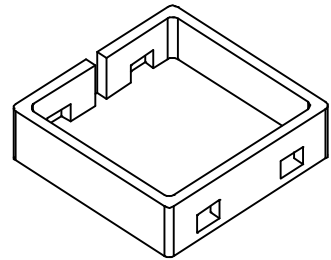
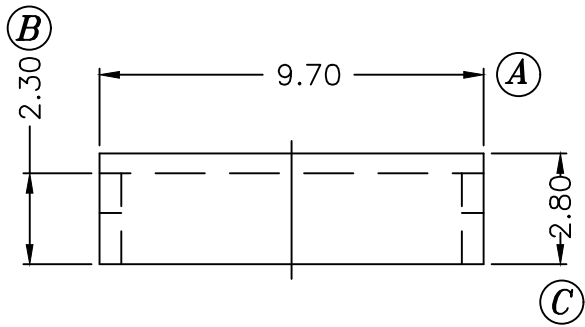


PART S-1204



REV.	REVISIONS REC.	DATE	REV.	REVISIONS REC.	DATE
1	DRAWING NO. S-1204A-->C-105				
2	CHANGE DIM: 0.7-->0.8+0.1/-0.05	'06.11.10			

DRAWN & DRAFTED BY QIN JIANG HU	TOLERANCES		ANGLE:	TITLE:	
	0<L≤4 ±0.1	pin pitch	±1°	COVER EF-12.6	
CHECKED & APPROVED BY JOHN RONG	4<L≤16 ±0.2		UNIT:	BOBBIN MATERIAL:	UL REC.
	16<L≤63 ±0.3		MM	LCP 6130	UL 94V-0
ORIGIN:			DG	PIN MATERIAL:	PIN TENSION LOAD:
PIN SHINE INDUSTRIAL CO.,LTD. TEL:886-2-22990545 FAX:886-2-22990546			DATE:	DRAWING NO.	REV.
			APR.23'2003	C-105	2