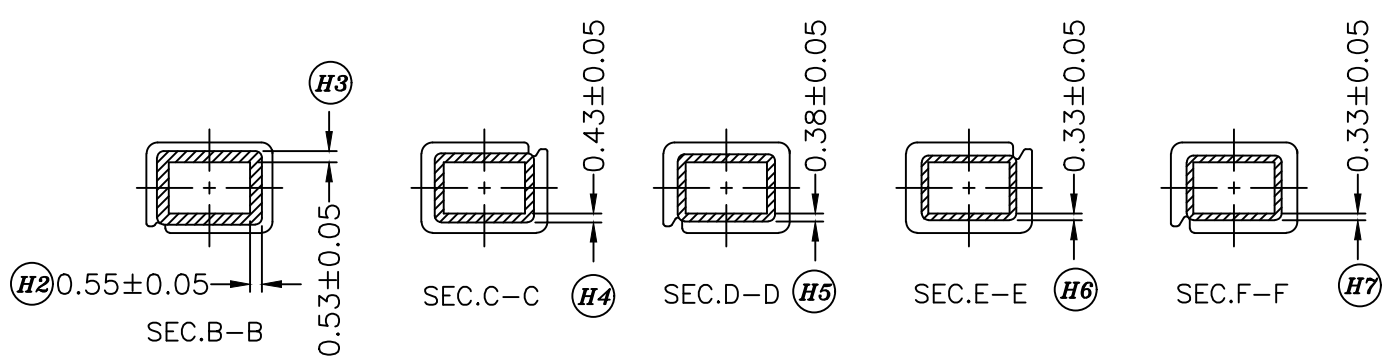
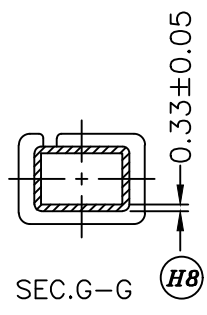
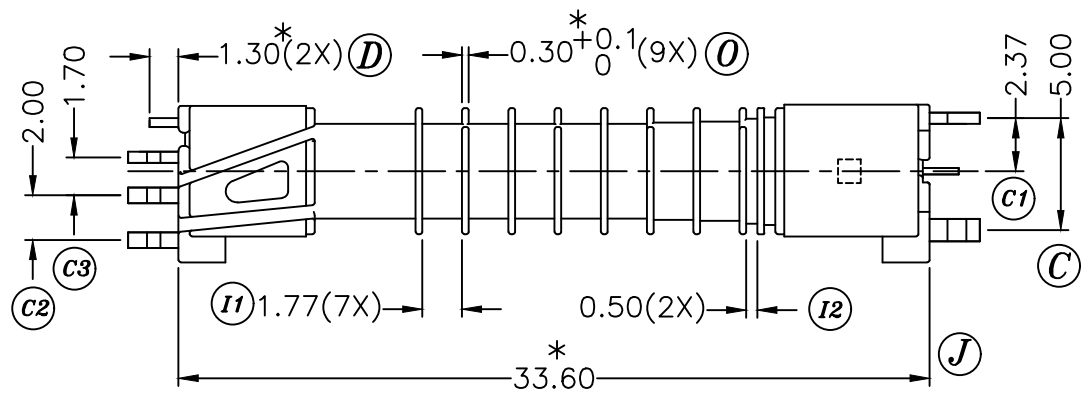
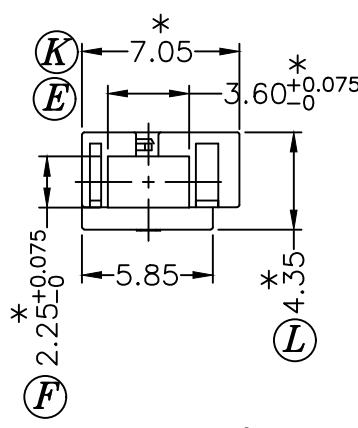
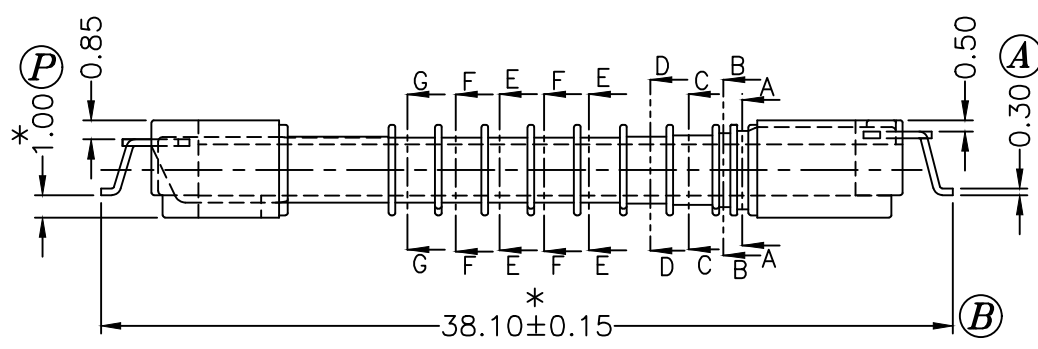


SEC.A-A



REV.	REVISIONS	REC.	DATE	REV.	REVISIONS	REC.	DATE
1	(D):1.00→1.30		'06.09.15				
2	(A5):0.30→0.40		'08.05.28				

DRAWN & DRAFTED BY XU HUAN	TOLERANCES		ANGLE: ±1°	TITLE: SMD BOBBIN CI-8.5		
	0<L≤4 ±0.1	COPLANARITY 0.1MAX	UNIT: MM	BOBBIN MATERIAL: LCP E4008	UL REC. UL 94V-0	
CHECKED & APPROVED BY	4<L≤16 ±0.1		ORIGIN: SZ	PIN MATERIAL: PHOSPHOR BRONZE	PIN TENSION LOAD: 2.0KG MIN	
	16<L≤63 ±0.1		DATE: MAY.06 '2006	DRAWING NO. S-822-8	REV. 2	