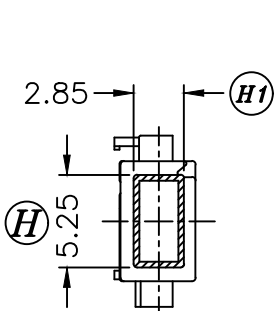
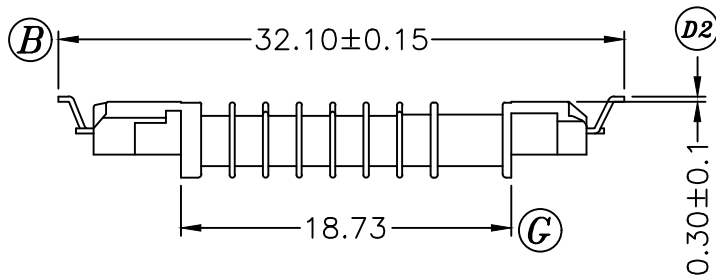
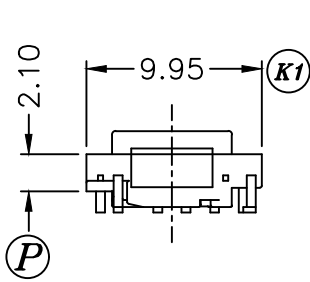
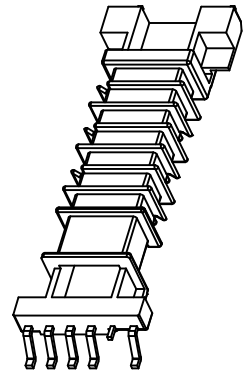
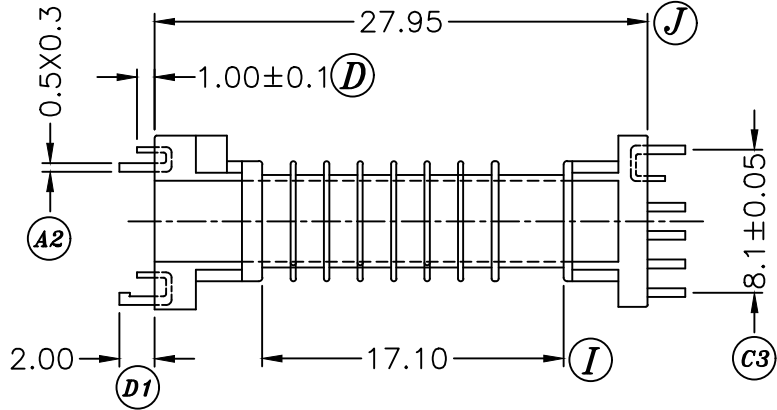


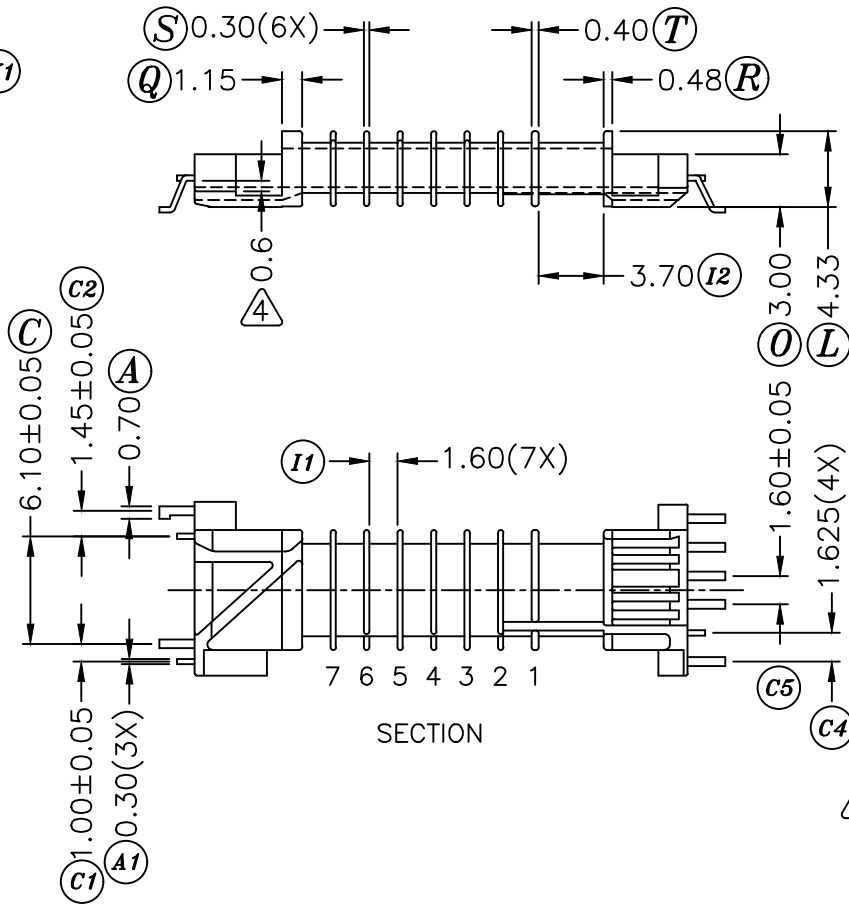
SECTION 2.4.6



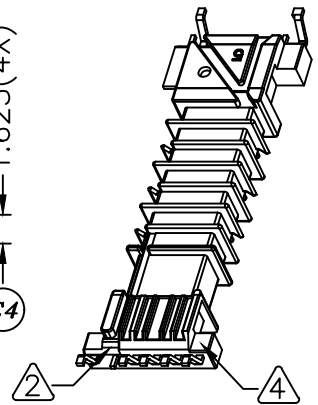
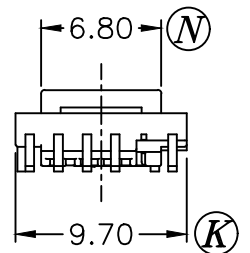
SECTION 3.5.7



SECTION 1



SECTION



REV.	REVISIONS REC.	DATE	REV.	REVISIONS REC.	DATE
1	端子材質硬度由:1/2H->H	'06.04.17	4	(K1): 9.85->9.95; 且高壓側標記 4 處尺寸:0.4->0.6	'07.05.22
2	低壓側假PIN 處過線槽結構設變, 詳見標記 2 處	'06.12.14			
3	(K1): 9.70->9.85	'07.04.09			

DRAWN & DRAFTED BY HOU YI MIN	TOLERANCES		ANGLE: ±1°	TITLE: UL-9.8-C SMD BOBBIN	
	±0.1	COPLANARITY 0.1 MAX	UNIT: MM	BOBBIN MATERIAL: LCP E4008	UL REC. UL 94V-0
CHECKED & APPROVED BY	ORIGIN: SZ		PIN MATERIAL: PHOSPHOR BRONZE(H)	PIN TENSION LOAD: 2.0KG MIN	
 PIN SHINE INDUSTRIAL CO., LTD. TEL:886-2-22990545 FAX:886-2-22990546			DATE: JUN.17 '2005	DRAWING NO. S-914-6	REV. 4