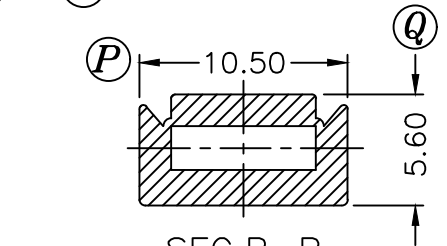
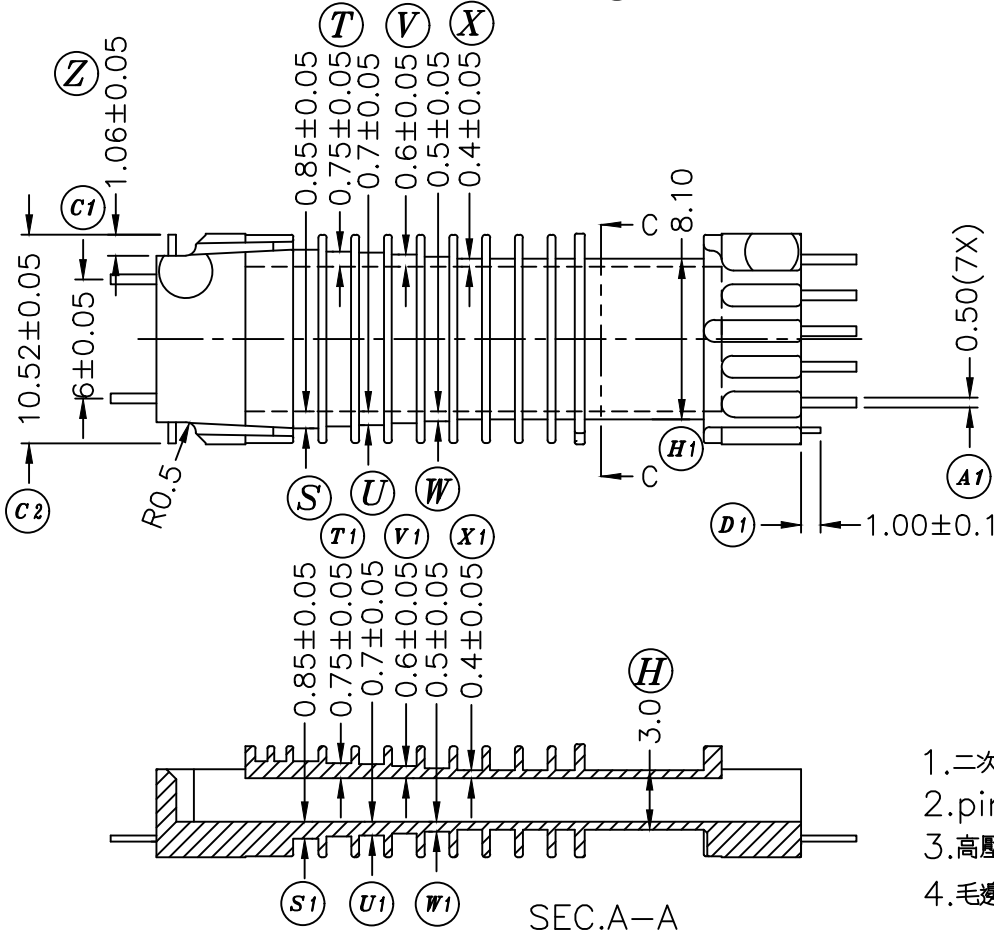
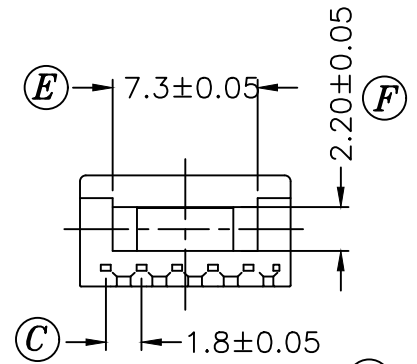
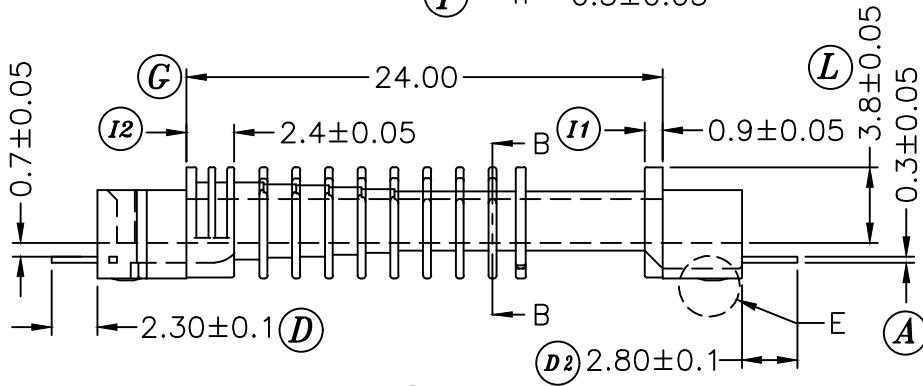
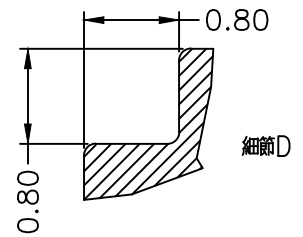


DETAIL E
SCA 3.00



SEC.B-B

SEC.C-C



細節D

- 1.二次電鍍pin腳平整度公差 $\geq 0.10\text{mm}$.
- 2.pin腳表面電鍍以霧面,亮面皆可.
- 3.高壓PIN腳埋入 $1.0\text{m/m} \pm 0.10$.
- 4.毛邊不得大於 0.03m/m .

REV.	REVISIONS	REC.	DATE	REV.	REVISIONS	REC.	DATE
1.	NAME:S-1011-5->S-1011-8		'06.4.26				
2.	圖面依產品修正,見細節圖'D'.		'07.6.28				

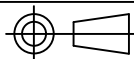
DRAWN & DRAFTED BY YANG CHEN	TOLERANCES		ANGLE:	TITLE:			
	0<L≤4 ±0.05	COPLANARITY 0.1 MAX	±1°	SMD BOBBIN LH-10(10 SEC)			
CHECKED & APPROVED BY	4<L≤16 ±0.10		UNIT:	BOBBIN MATERIAL:		UL REC.	
	16<L≤63 ±0.15		MM	LCP E4008		UL 94V-0	
ORIGIN:			PIN MATERIAL:		PIN TENSION LOAD:		
SZ			PHOSPHOR BRONZE		2.0KG MIN		
DATE:			DRAWING NO.		REV.		
JUN.28 '2006			S-1011-8		2		



PIN SHINE INDUSTRIAL CO., LTD.

TEL:886-2-22990545

FAX:886-2-22990546



DATE: JUN.28 '2006

DRAWING NO.

S-1011-8

REV. 2