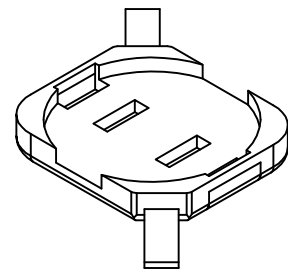
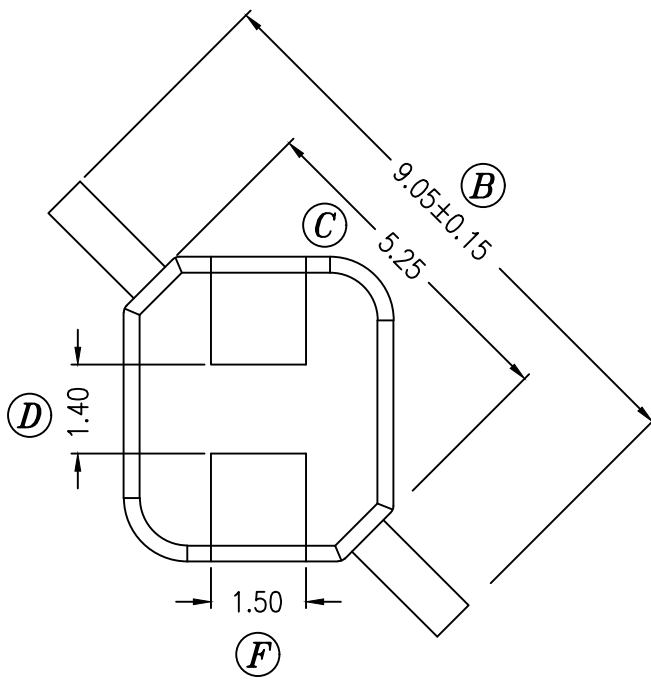
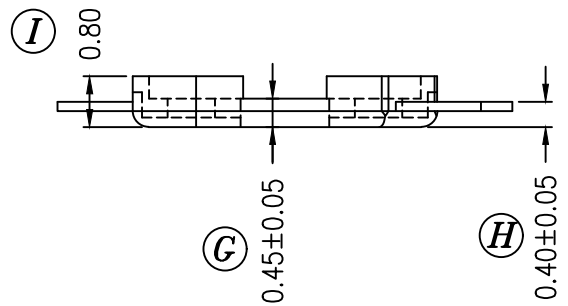
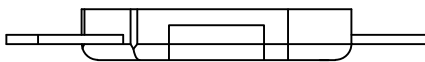


SECTION A-A



REV.	REVISIONS	REC.	DATE	REV.	REVISIONS	REC.	DATE

DRAWN & DRAFTED BY SHANG LAN	TOLERANCES		ANGLE:	TITLE:			
	0<L≤4 ±0.1	pin pitch ±0.2	±1°	SMD BASE 4.25X4.8X0.45		UL REC.	
CHECKED & APPROVED BY JOHN RONG	4<L≤16 ±0.2		UNIT:	BOBBIN MATERIAL:	L.C.P E-4008		UL 94V-0
	16<L≤63 ±0.3		MM	PIN MATERIAL:	PHOSPHOR BRONZE		PIN TENSION LOAD:
ORIGIN: DG			DATE:	DRAWING NO.		REV.	
PIN SHINE INDUSTRIAL CO.,LTD. TEL:886-2-22990545 FAX:886-2-22990546			APR.11 2000	SB-012		0	