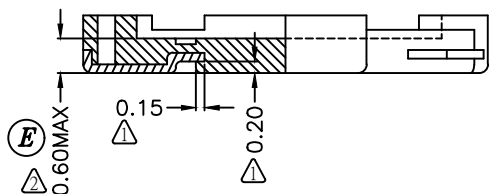
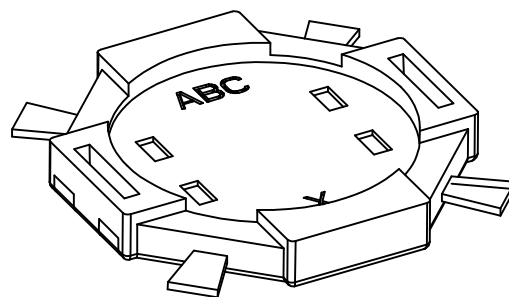
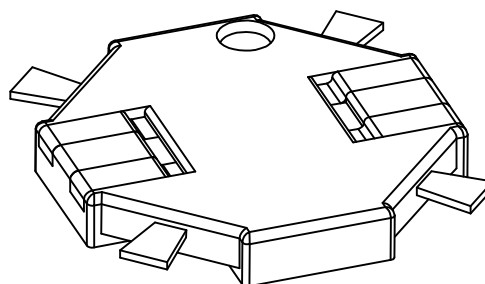
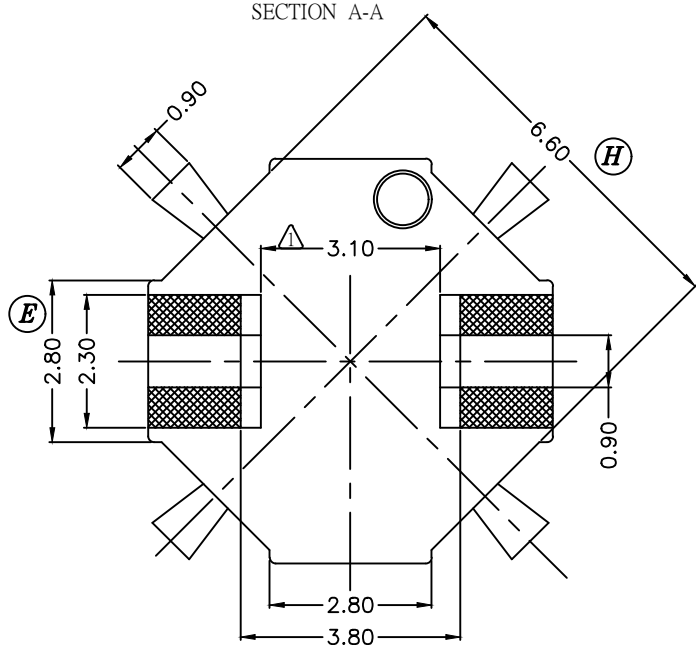
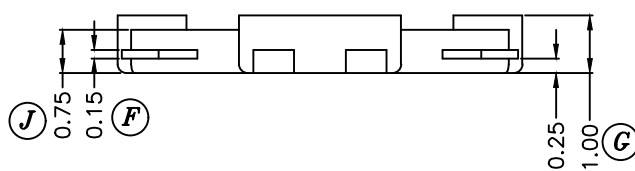


PIN示意圖



SECTION A-A



備註:

電鍍規格: Sn100% 5~10um, Ni 1.27~2.0um. Δ

REV.	REVISIONS REC.	DATE	REV.	REVISIONS REC.	DATE
1	修正結構: 0.1變更為0.2; 2.9變更為3.0, 加膠0.15. Δ	'07.05.24	4	變更公差, 5.4±0.2-->5.4±0.1 Δ	'13.01.03
2	變更尺寸. Δ	'12.05.15			
3	更新電鍍規格. Δ	'12.05.17			

DRAWN & DRAFTED BY LI JIE	TOLERANCES		ANGLE:	TITLE:		
	0<L≤4 ±0.1	pin pitch ±0.2	±1°	SMD BASE 7X5.4X1.0		
CHECKED & APPROVED BY	4<L≤16 ±0.2		UNIT:	BOBBIN MATERIAL:		UL REC.
	16<L≤63 ±0.3		MM	LCP E4008		UL 94V-0
 PIN SHINE INDUSTRIAL CO., LTD. TEL:886-2-22990545 FAX:886-2-22990546	ORIGIN:	DG	PIN MATERIAL:		PIN TENSION LOAD:	
			PHOSPHOR BRONZE		0.8KG MIN	
			DATE:	DRAWING NO.	REV.	
			NOV.20 '2003	SB-066	4	